

Product Information ÖKO 2

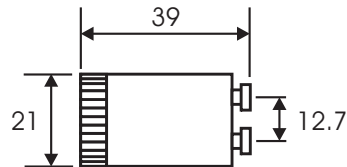
Electronic starter for 4-22W single or twin series fluorescent lamp circuits.

The soft start system utilised in the ÖKO 2 electronic starter first pre-heats the lamp cathodes to working temperature, before applying a controlled voltage pulse to strike the arc. This method of ignition prevents cathode damage and significantly lengthens lamp life. Additionally, a safety monitoring system shuts down the system in the event of a fault and prevents dangerous overheating and the annoying flashing associated with glow type starters. Refined circuit methods allow us to provide a 10 year no quibble guarantee for this product which has a proven design life exceeding 20 years.

Housed in a two - pin canister with dimensions in accordance to IEC155, for the direct replacement of glow starters without circuit modification.

Dimensions & materials :

Canister:	Polycarbonate, translucent green
Printing:	Silver
Base:	Polycarbonate
Pins:	Nickel plated brass

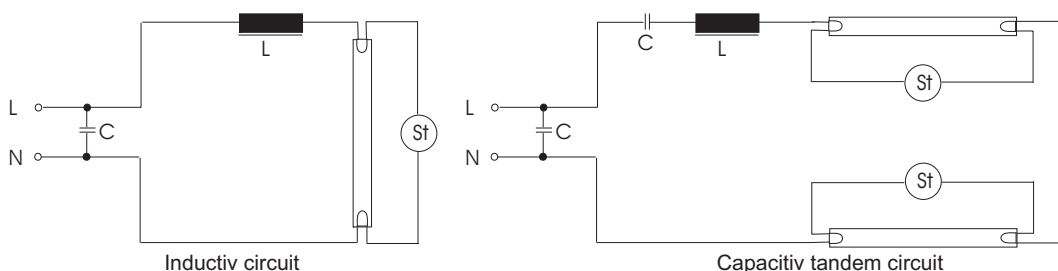


All dimensions in millimetres

Technical Data :

Operating voltage :	110 - 250 V AC 50/60 Hz
Preheat time :	2.8 seconds nominal @ 20°C
Pulse height :	1500 V maximum
Safety shutdown :	Within 3.5 seconds @ 20°C
Lamp types :	4-8W Linear T5 10-20W Linear T8/T12 5W PLS (TC)** 7-9W PLS (TC) 18W PLL (TC-L) 22W Circular (TR)** ** Not twin series -find more details and actual lamp list under www.palmstep.com
Operating temperature :	- 20 to + 100°C
Storage temperature :	- 50 to + 105°C

Approvals:



We reserve the right to alter details and specifications without prior notice. © PALM STEP ELECTRONICS Ltd 1999.